

Container Nursery Flea Beetle Control & Prevention

Following a Positive Scouting Report:

Read all labels carefully to ensure recommendations apply to your plant selections

DAY 1

Granular application of Chlorpyrifos 2.32 G @ 100lbs/acre if it's been more than 60 days since last application.

After application spray per 100 gal:

Acephate 90 @ 10.0 oz.

Talstar™ @ 20 oz.

Di Aqua Surfactant @ 16 oz.

DAY 4 per 100 gal:

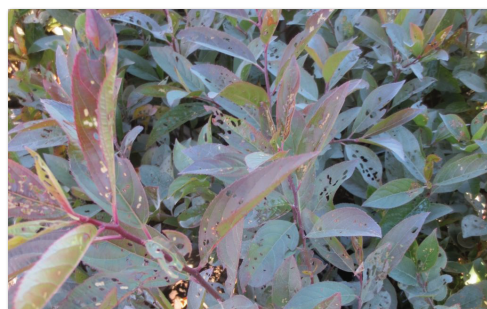
Hachi Hachi® @ 27 oz.

Di Aqua Surfactant @ 16 oz.

DAY 9 per 100 gal:

Serisa™ @ 27 oz.

Di Aqua Surfactant @ 16 oz.



Damage from untreated infestation

Preventative Program (14 day spray intervals)

At Early Bud Break

Granular application of Chlorpyrifos 2.32 G @ 100lbs/acre. Repeat at 60 day intervals while beetles are active. Begin spray program immediately.

Spray Application 1 per 100 gal:

Acephate 90 @ 10.0 oz.

Talstar™ @ 20 oz.

Di Aqua Surfactant @ 16 oz.

Spray Application 2 per 100 gal:

Hachi Hachi® @ 16 oz.

Di Aqua Surfactant @ 16 oz.

Spray Application 3 per 100 gal:

Serisa™ @ 27 oz.

Di Aqua Surfactant @ 16 oz.

Spray Application 4 per 100 gal:

Carbaryl 4L @ 32 oz.

Di Aqua Surfactant @ 16 oz.



Red headed flea beetle damage



Talstar is a registered trademark of FMC Corporation
Hachi Hachi is a registered trademark of OHP, Inc.
Serisa is a trademark of OHP, Inc.